

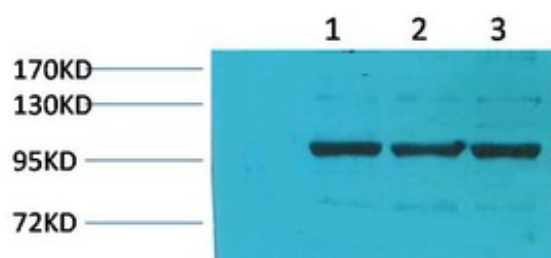


IGFN1 Polyclonal Antibody

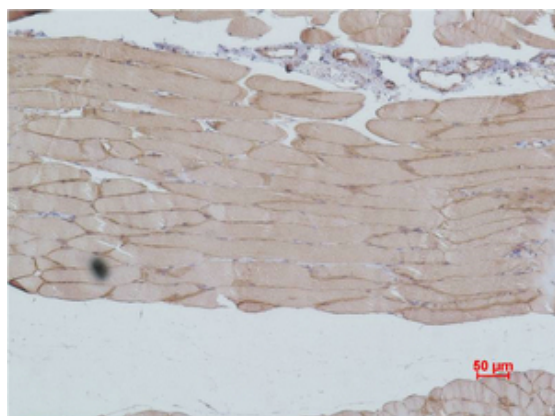
Catalog No	YP-Ab-01204
Isotype	IgG
Reactivity	Human;Mouse;Rat
Applications	WB;IHC;IF
Gene Name	IGFN1
Protein Name	Immunoglobulin-like and fibronectin type III domain-containing protein 1
Immunogen	Recombinant Protein of IGFN1
Specificity	The antibody detects endogenous IGFN1 protein.
Formulation	PBS, pH 7.4, containing 0.5%BSA, 0.02% sodium azide as Preservative and 50% Glycerol.
Source	Polyclonal, Rabbit,IgG
Purification	The antibody was affinity-purified from rabbit antiserum by affinity-chromatography using epitope-specific immunogen.
Dilution	WB: 1:2000-5000 IHC: 1:200-500. IF 1:50-200
Concentration	1 mg/ml
Purity	≥90%
Storage Stability	-20°C/1 year
Synonyms	Immunoglobulin-like and fibronectin type III domain-containing protein 1; EEF1A2-binding protein 1; KY-interacting protein 1
Observed Band	115kD
Cell Pathway	Nucleus . Cytoplasm, myofibril, sarcomere, Z line .
Tissue Specificity	Expressed in skeletal muscle.
Function	similarity:Contains 4 fibronectin type-III domains.,similarity:Contains 5 Ig-like (immunoglobulin-like) domains.,subunit:Interacts with KY.,tissue specificity:Expressed in skeletal muscle.,
Background	similarity:Contains 4 fibronectin type-III domains.,similarity:Contains 5 Ig-like (immunoglobulin-like) domains.,subunit:Interacts with KY.,tissue specificity:Expressed in skeletal muscle.,
matters needing attention	Avoid repeated freezing and thawing!
Usage suggestions	This product can be used in immunological reaction related experiments. For more information, please consult technical personnel.



Products Images



Western blot analysis of 1) Pig Skeletal Muscle Tissue, 2) Rat Skeletal Muscle Tissue, 3) Rat Skeletal Muscle Tissue using IGFBP1 Polyclonal Antibody. Secondary antibody (catalog#: RS0002) was diluted at 1:20000



Immunohistochemical analysis of paraffin-embedded Mouse Skeletal Muscle Tissue using IGFBP1 Polyclonal Antibody.